

SOFTWARE FOR ELECTROPLATING AND ELECTROCHEMISTRY

ERP SOLUTION KSQPRODUCTION

KSQproduction

Status Diagramme Programme / Aufträge Com-Verbindungen Einstellungen

Restzeit > 00h00m00s > 00h00m00s > 00h00m00s in Sekunden

Programm / Fertigungsauftrag

Unit	Material	Program	Step
Nickel 1	1204		
K1	Wartet	Belegen 1	Vor End
K2	Wartet	Belegen 1	IST
K3	Wartet	Belegen 1	Vor End
K4	Wartet	Belegen 1	Vor End

Unit	Material	Program	Step
Unit02	1204		
K1	Wartet	Belegen 1	Vor End
K2	3	0	Belegen 1
K3	Wartet	Belegen 1	Vor End
K4	Wartet	Belegen 1	Vor End

Unit	Material	Program	Step
Unit07	1204		
K1	Wartet	Belegen 1	IST
K2	Wartet	Belegen 2	IST
K3	Wartet	Belegen 3	IST
K4	Wartet	Belegen 4	IST

Unit	Material	Program	Step
Unit08	1204		
K1	Wartet	Belegen 1	Vor End
K2	Wartet	Belegen 1	Vor End
K3	Wartet	Belegen 1	Vor End
K4	Wartet	Belegen 1	Vor End



Software for galvanic and electrochemical processes

The KSQproduction software offered for our power sources was developed for the production of galvanic and electrochemical products.

The KSQproduction software extends the range of functions of your Kirchner KSQ power sources and enables you to:

- Batch tracking
- Process data acquisition
- Production order management

The KSQproduction software enables the creation of stream programs with ramps and steps and also includes customized modules that facilitate the efficient production of diamond and CBN grinding tools.

Functions of the KSQproduction

The KSQproduction software enables the following functions with the KSQ galvanic rectifier:

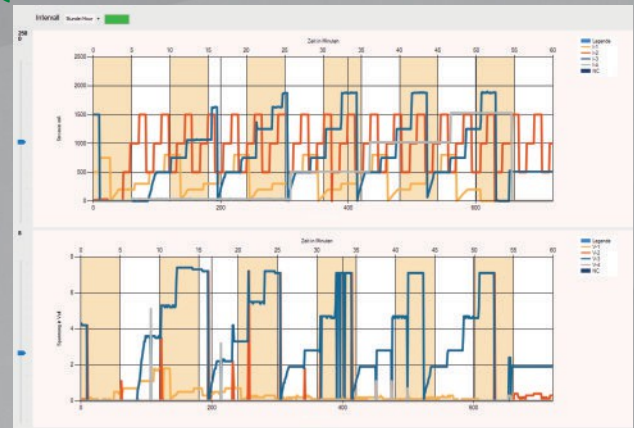
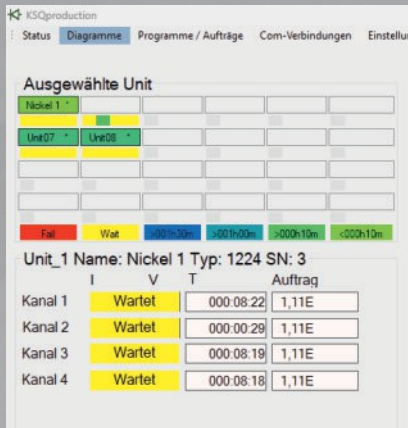
- Data log Current/Voltage/Charge/Program
- Simultaneous control of up to 24 galvanic rectifiers
- Flowcharts up to 12 individual steps
- Programs with ramps and steps
- Coating time up to 1000h per single step
- Batch management
- Creating and saving circuit diagrams
- Presentation of production data in diagrams
- Tracking and documentation
- Export of production data to Excel



KIRCHNER
Galvanik

SOFTWARE FOR ELECTROPLATING AND ELECTROCHEMISTRY

ERP SOLUTION KSQPRODUCTION



All devices at a glance Status overview

The status overview shows the most important parameters of all connected KSQ galvanic rectifiers.

Up to 24 galvanic rectifiers can be monitored and controlled with a single PC via USB-RS232 connection cable.

All devices work autonomously. If the connection is interrupted or the IT system fails, the devices continue to run their program.

All operating states and any faults of the KSQ rectifiers are clearly displayed in color in tabular form:

- Current density
- Current voltage
- Electricity program
- Production progress

Process data acquisition and diagrams

The diagram view shows all the key operating parameters of each individual KSQ12XX unit at a glance:

- Current / voltage / process time
- AH per channel and device
- Current operating states and faults

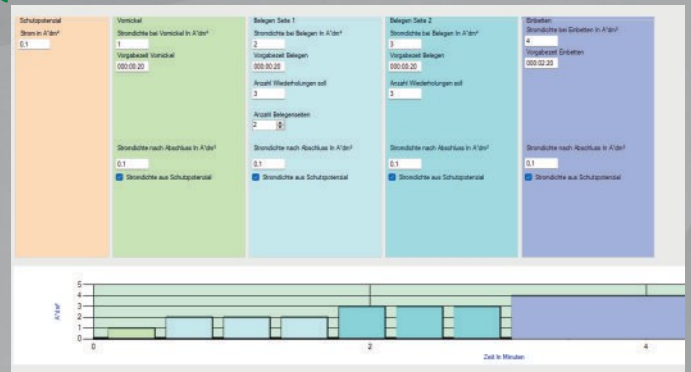
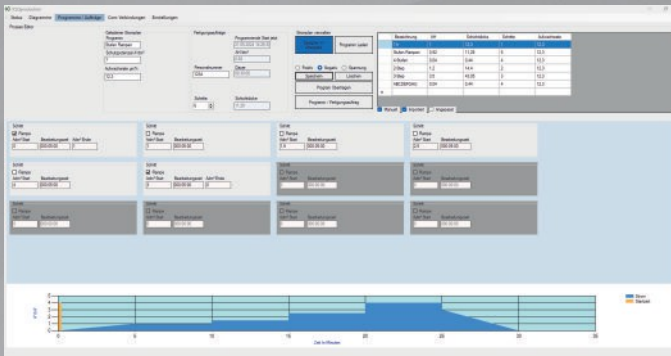
Current and voltage can be displayed at intervals of between one hour and one year.

All relevant operating parameters of the power sources, including any faults that occur, are logged.

Products can be assigned to production orders, time stamps and device numbers as required. By exporting the data to .csv files, the data can also be evaluated externally.

SOFTWARE FOR ELECTROPLATING AND ELECTROCHEMISTRY

ERP SOLUTION KSQPRODUCTION



Current plan designer Simple circuit diagram creation

The flow chart designer is used to create process plans.

Both steps and ramps can be freely defined.

The graphical representation of the circuit diagram, which is automatically generated when the parameters are entered, is used for visualization and helps to avoid possible errors in the process.

Simple management of the created circuit diagrams is used for easy operation and management of the individual production orders.

Each individual channel of a KSQ galvanic rectifier can be assigned its own individual current plan. This current plan is processed individually and independently of the other channels.

Modules for electroplated diamond tools

The KSQproduction software has customized modules that considerably simplify the production of electroplated diamond tools.

KIRCHNER POSITV MODULE

Enables the creation of programs for manual diamond coating of grinding wheels, coating, embedding and final nickel plating of CBN and diamond tools.

KIRCHNER MODULE NEGATIVE

Enables multi-step programs required for the production of high-precision negative electroplated grinding wheels. Process times of a few seconds up to 999 hours are possible for each individual step.



Our philosophy - your success

We have an in-depth understanding of processes and many years of experience in the production of electroplated products. This enables us to offer products that precisely meet the requirements of our customers.

Our devices are tailored to the specific requirements of diamond tool manufacturers.

We offer customers from the medical technology sector the opportunity to document their processes at batch level.

Precious metal electroplating customers can determine the exact amount of gold consumed.

We are also happy to offer you a solution tailored to your application.

ABOUT US

Kirchner Elektronik has more than 20 years of experience in the field of constant current sources. The devices manufactured by Kirchner Elektronik are characterized by their consistent optimization with regard to the requirements of electrochemical processes.

Kirchner-Galvanik GmbH, based in Waldshut, Germany, works for customers in industry, research and development.

Our devices have been in use throughout Europe, Asia and the USA for many years.

How to reach us: Kirchner
Galvanik GmbH
Tannenstrasse 51
79761 Waldshut
Tel: ☎ +49+1575 300 4049



info@kirchner-galvanik.de
www.kirchner-galvanik.de

VAT ID no.: 270648212
HBR: 712807 Freiburg